



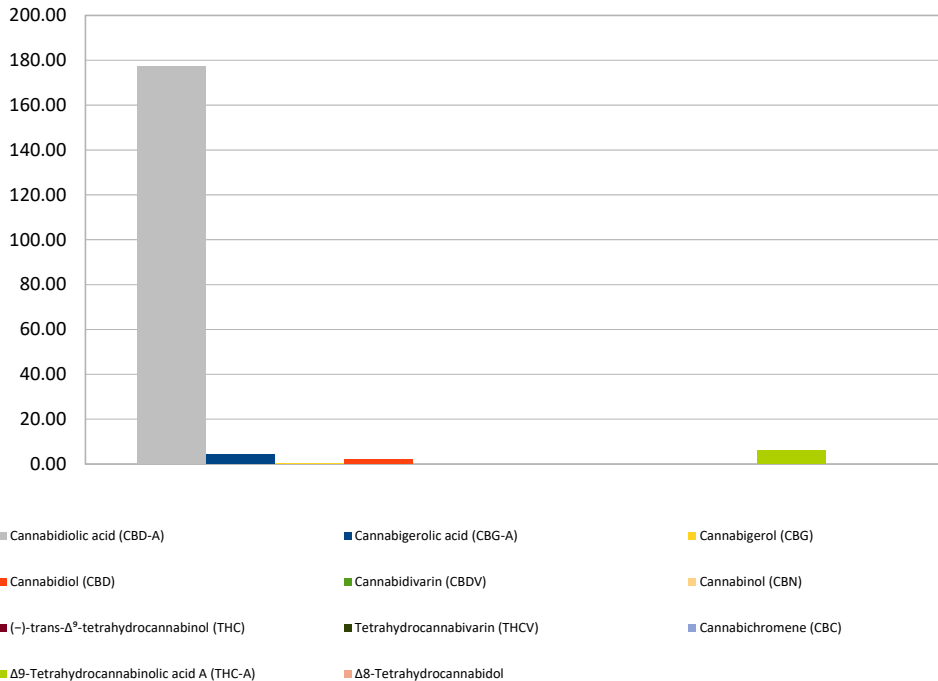
Cannabinoid Profile

Customer: HFN, LLC
Customer Sample ID: Cherry C
Laboratory Number: 201812-0336
Extraction Technician: RH
Analytical Chemist: GB

Extraction Date(s):	Analysis Date(s)
12/5/2018	12/6/2018

Cannabinoid (HPLC)	Results		
	LOD (mg/g)	Percent	mg/g
Δ8-Tetrahydrocannabinol	<0.1		
Cannabidiolic acid (CBD-A)		17.71%	177.05
Cannabigerolic acid (CBG-A)		0.42%	4.18
Cannabigerol (CBG)		0.04%	0.37
Cannabidiol (CBD)		0.19%	1.90
Cannabidivarin (CBDV)	<0.1		
Cannabinol (CBN)	<0.1		
(-)-trans-Δ ⁹ -tetrahydrocannabinol (THC)	<0.1		
Tetrahydrocannabivarin (THCV)	<0.1		
Cannabichromene (CBC)	<0.1		
Δ9-Tetrahydrocannabinolic acid A (THC-A)		0.60%	6.04
Cannabinoids Total		Percent	mg/g
Max Active THC		0.53%	5.29
Max Active CBD		15.72%	157.17
T. Active Cannabinoids		0.23%	2.27
Total Cannabinoids		18.95%	189.54
Ratios			
	29.65	:1 CBD to THC	0.03 :1 THC to CBD

Cannabinoid (mg/g)



Altitude Consulting, LLC utilizes NIST traceable Reference Standards and Certified Reference Material to calibrate analytical instruments along with proven analytical methods. The methods are applied in the most ethical manner following good laboratory practice guidelines. The results of this report are based solely on the sample submitted and cannot be reproduced.